

Materials Provided:

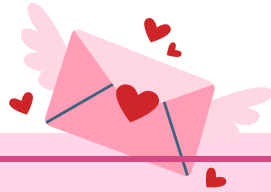
- 1 sheet 12 x 12 red felt
- 1 sheet 12 x 12 white felt
- 1 heart template
- Stuffing

Tools Needed:

- Scissors
- Erasable pen or chalk
- Ruler



**MORE THAN
JUST BOOKS!**



CONTACT US

Mindy Farmer
Adult Services Librarian
515-465-3569
mfarmer@perry.lib.ia.us

www.perry.lib.ia.us
1101 Willis Ave
Perry, IA 50220



Instructions

NO SEW

HEART PILLOW

Free DIY Kit

FEBRUARY



SHARE WITH US

We'd love to see your finished pillow!
Send a photo to
mfarmer@perry.lib.ia.us and we may
share it on our Facebook album at
www.facebook.com/PerryLibraryIowa
or at www.perry.lib.ia.us!

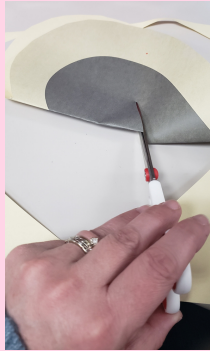


Instructions



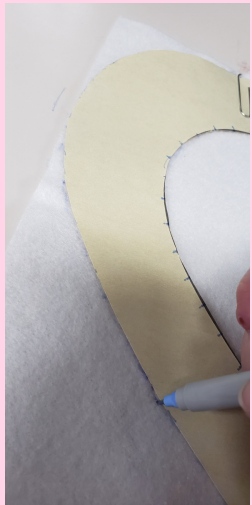
Step 1: Create Pattern

- Trim around the large heart
- Cut out the small inner heart
- This creates your pattern



Step 2: Trace Pattern

- Lay the heart template across the sheet of white felt
- Use an erasable pen or chalk to trace the large heart outline on the felt
- Then, trace the small heart outline
- Cut out the large heart in white felt

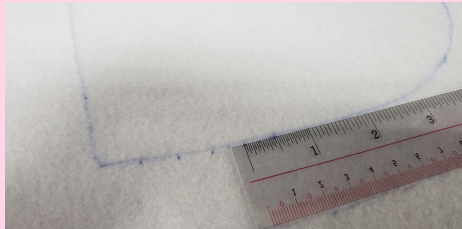


Instructions



Step 3: Measure and Mark

- Take a ruler and measure around the inner part of the heart, marking 1/2 inch increments
- You will use these marks to create even strips for cutting and tying



Step 4: Cut Felt Hearts

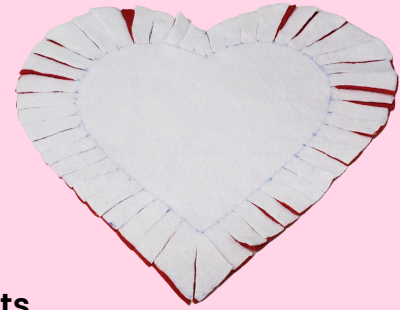
- Lay the white heart over the red felt
- Pin the two fabrics together
- Cut around the white heart to create a matching red heart



Step 5: Cut 1/2 inch Strips

- Start cutting through both fabrics up to the 1/2 inch marks in the small center heart
- Do this all the way around your heart
- The strips will be longer in some areas due to the dimensions of the heart

Instructions



Step 6: Tie Knots

- Take 1/2 strips and tie the red and white together
- Make a knot at the edge of the small heart
- Do not pull too tight, or you may tear the felt
- Tie until you have a few strips left



Step 7: Stuff and Close

- Push stuffing through gap until heart is pillow-shaped



- Finish tying your last strips of felt to complete the pillow