

Supplies Provided

- 56 Paper Straws
- One 8-inch wood craft round
- Twine

Supplies Needed

- Hot Glue Gun
- Glue Sticks
- Ruler
- Scissors
- Embellishments (optional)



Contact Us

We'd love to see your finished project! Send a photo to mfarmer@perry.lib.ia.us and we may share it on our Facebook album or at www.perry.lib.ia.us!

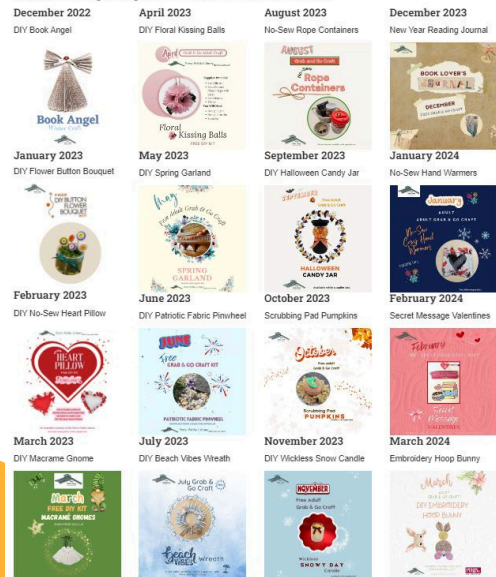
Grab & Go Archives

Discover all of our projects at www.perry.lib.ia.us!

Grab and Go Craft Archive

Visit the Grab and Go Craft Archive find instructions for previous month's crafts. You can download PDFs with instructions and make your own, fun DIY creations. Patrons will need to purchase supplies to create crafts from previous months.

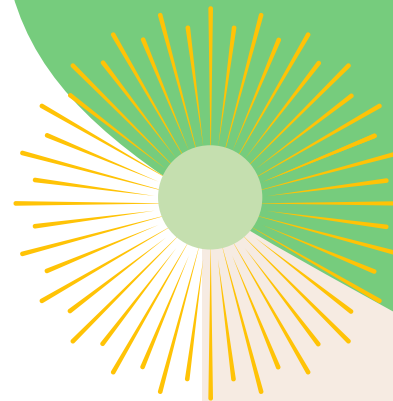
Click on the images to open a PDF document with instructions.



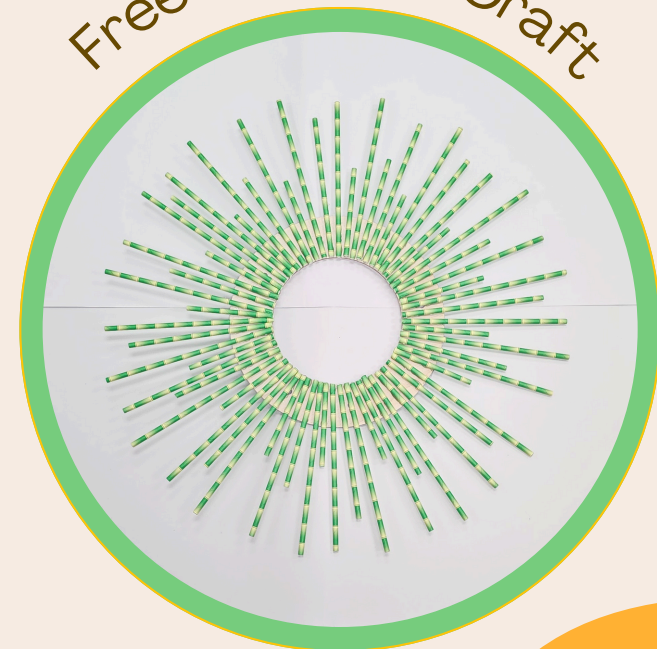
JUNE

Grab & Go

Sunburst Wreath
Stream



Free DIY Adult Craft



Instructions

Step 1:

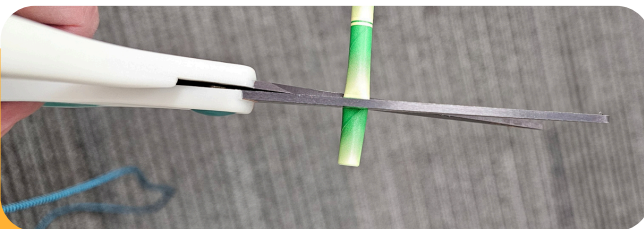
Take your twine, weave through one hole on your wreath, then tie a knot. This will be used for hanging your wreath.



Step 2:

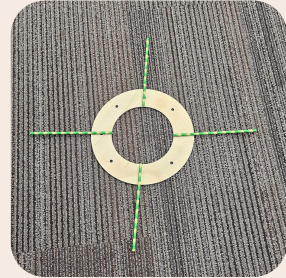
Cut and divide straws into different sizes. You will begin with 56 straws and end with 64. The colors refer to the pattern used to make the starburst. Each size has a color on the reference pattern.

- 8 Full Size (Red)
- 24 cut to 7.5 inches (Orange)
- 8 cut to 6.5 inches (Yellow)
- 8 cut to 5 inches (Green)
- 8 cut in half (16 Blue)



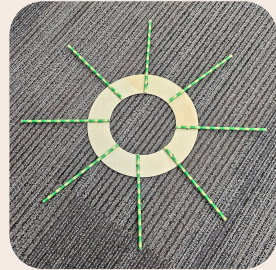
Step 3:

Create 4 sections on your wreath by gluing 4 full size (red) straws evenly around the wreath.



Step 4:

Divide your wreath into 8 sections by gluing a full size (red) straw (4 more total) between each section.



Step 5:

Using the included pattern, add straws into each all eight quadrants as follows:

- Red
- Yellow
- Orange
- Blue
- Orange
- Green
- Orange
- Blue
- Red



Tips:

1. Lay out your straws before gluing them
2. Adapt the straw lengths to your tastes
3. Arrange according to the included pattern or create your own - just know that, once the straws are glued down, they cannot be moved.
4. Consider painting the unfinished wood pale yellow or adding embellishments

